

How to Order Parts

All of our parts get ordered through Quartzzy. Quartzzy is an inventory software that keeps all of our orders in one location. Please ask us to get you an account if you don't have one yet.

For normal parts (i.e. stuff of Amazon), make sure you have the URL of the page for it and possibly the part number. Please enter the exact price listed on the page.

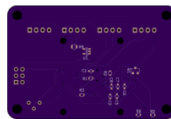
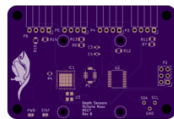
For OSHPark orders, once you have uploaded your documents to the OSHPark website, go to your projects, and share the project. Get a permalink for the project and use it to when submitting your order on Quartzzy.

Your Current Projects

My Shared Projects

depthSensorBoard.kicad_pcb

2 layer board of 2.63 x 1.76 inches (66.7 x 44.6 mm).
Shared on February 14th, 2018 23:18 Uploaded on February 14th, 2018 23:14.



Top

Bottom

Previous orders:

- February 14th, 2018 (RECEIVED) [View order](#)

depth sensor board

For Digikey Orders, click "share cart" and copy the link given by Digikey. Use that link when submitting a purchase order on Quartzzy.

Quantity	Part Number	Customer Reference	All prices are in USD.						
<input type="text"/>	<input type="text"/>	<input type="text"/>	Available Quantity	Backorder Quantity	Unit Price	Extended Price			
16	311-100KRC1ND	RES SMD 100K OHM 1% 18W 0905	16 Immediate	0	0.02200	\$0.35	R1 R2 R3 R4 R5 R6 R7 R8 R9		
1	422210K 3.3TRG100CTND	IC REG LINEAR 3.3V 300MA SOT23-5	1 Immediate	0	0.42000	\$0.42	U1		
10	311-1385-1-ND	CAP CER 1UF 16V X7R 0805	10 Immediate	0	0.07900	\$0.79	C1		
10	1276-2087-1-ND	CAP CER 4.7UF 6.3V X7R 0603	10 Immediate	0	0.09900	\$0.99	C9		
1	298-15777-1-ND	TRANS BNPV DARL 50V 0.5A 1850	1 Immediate	0	1.53000	\$1.53	IC1		
10	160-1446-1-ND	LED GREEN CLEAR 0603 SMD	10 Immediate	0	0.21100	\$2.11	D9 D10		
3	587-1293-1-ND	CAP CER 2.2UF 16V X5R 0805	3 Immediate	0	0.16000	\$0.48	C3		
1	SER40700CTND	CRYSTAL 16.00 MHZ 9PF SMD	1 Immediate	0	0.56000	\$0.56	U2		

Input

New Cart - create a new empty cart
 Fast Add - bulk add multiple part numbers to your cart
 Add Carts - add previous carts
 Add BOM - add existing BOMs
 Add Quote - add previous Quotes
 Resume Cart - resume a previous cart
 Upload to Cart - upload a file, csv, txt, xls, xlsx

Options

Update Stock Status - refresh the quantity available

Output

Download - save a copy of your cart in spreadsheet format
 Cart Share - create a new cart including only the quantity, part numbers, and customer reference

From: <http://robosub-old.eecs.wsu.edu/wiki/> - Palouse RoboSub Technical Documentation

Permanent link: <http://robosub-old.eecs.wsu.edu/wiki/ee/partsordering?rev=1518651282>

Last update: 2018/02/14 15:34